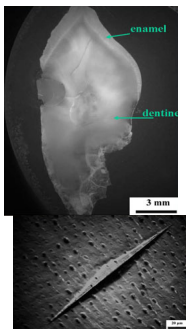


The aim of this research is the determination of hardness (H), and elastic properties such as Young's modulus (E) of human teeth. These properties are an important for understanding the mechanical behavior of teeth under clinical loading conditions. Knoop indentation test enables the E-value of human teeth to be obtained in a simple fashion and has the potential to be used as a quality control tool in the development of dental implants or prosthetic teeth.



In the attachment below, results are presented on the hardness and E-modulus of enamel and dentine of human teeth.